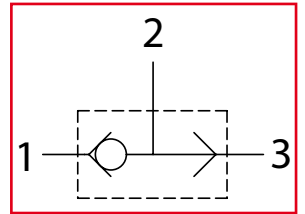




# SV

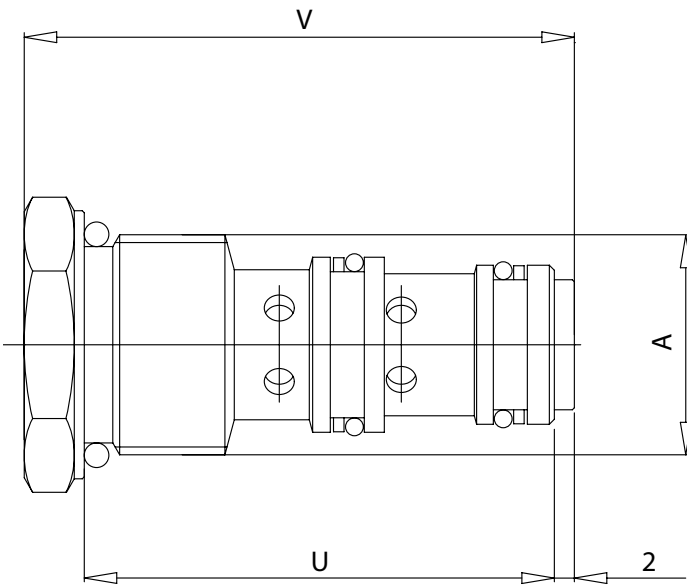
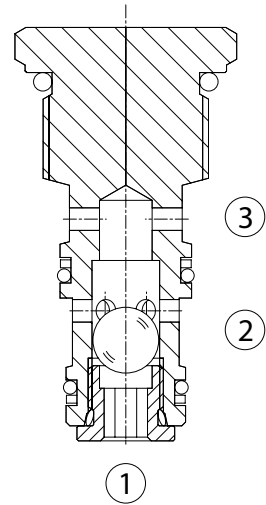
Valvole selettive  
Load shuttle-ball valves



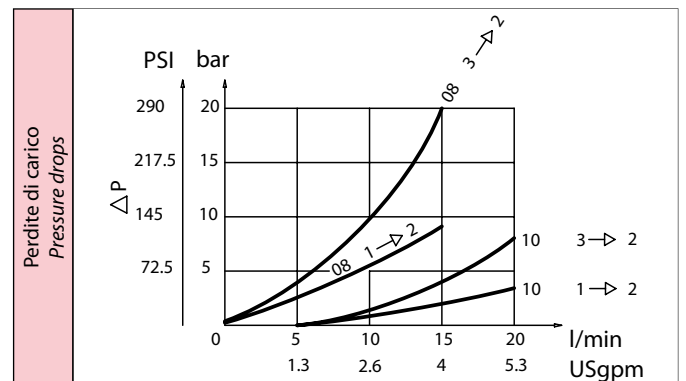
**LEHENGOMAK, S.p.A.**



| Dati tecnici<br>Technical data              |  |
|---|--|
| Viscosità fluido<br>Fluid viscosity         | 10-500 mm <sup>2</sup> /s<br>45 to 2000 ssu (6 to 420 cSt) |
| Classe di contaminazione<br>Filtration      | ISO code 16/13<br>SAE class 4 or better                    |
| Temperatura fluido<br>Fluid temperature     | -20°C +80°C<br>-4°F +176°F                                 |
| Temperatura ambiente<br>Ambient temperature | -20°C +50°C<br>-4°F +122°F                                 |



[ mm  
(Inches) ]



| Caratteristiche tecniche<br>Technical performances |              |  |  |           |           |   |  |                  |
|--|--------------|--|--|-----------|-----------|---|--|------------------|
| Codice Code  | A            | Portata Max<br>Max flow<br>l/min - USgpm | Pressione Max<br>Max pressure<br>bar/PSI | U         | V         | Peso approssimativo<br>Approx weight<br>Kg / lb | Coppia di serraggio<br>Tightening torque<br>Nm / lbfft | Cavità<br>Cavity |
| SV08   | 3/4 - 16 UNF | 15 (4)                                   | 350 (5000)                               | 41 (1.61) | 49 (1.93) | 0,10 (0.22)                                     | 25-30 (19-22)  | SAE8/3           |
| SV10   | 7/8 - 14 UNF | 30 (8)                                   |  | 47 (1.85) | 55 (2.16) | 0,11 (0.25)                                     | 41-47 (30-35)  | SAE10/3          |

**LEHENGOMAK, S.p.A.**